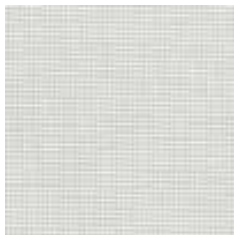
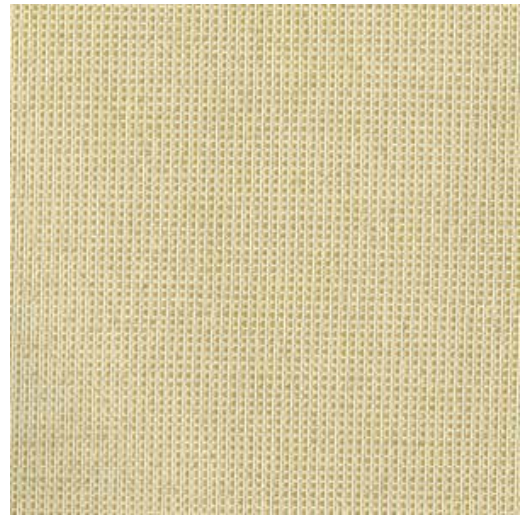


Luma
5156

Use Wallcovering
 Content 12% Polyester (Preconsumer Recycled), 37% Olefin, 44% Polyester, 7% Polyester (Postconsumer Recycled)
 Finish Crypton for Walls
 Backing Acrylic (Flame Retardant)
 Cleaning Water-based/Solvent (WS), Bleach Cleanable (10:1)
 Weight 12.28 ounces/linear yard
 Width 56 inches (142 cm)
 Hanging Method
 Straight Hang, Random Match
 Flammability ASTM E 84 Adhered Class A
 Lightfastness 40 hours
 ACT f d e
 Standards & Certifications Greenguard Gold
 LEED Recycled Content
 Sustainable Logistics Ships Carbon Neutral
 Warranty 10 years
 Origin United States



Marshmallow
5156-101



Linen
5156-102



Wheat
5156-104



Latte
5156-105



Sage
5156-107



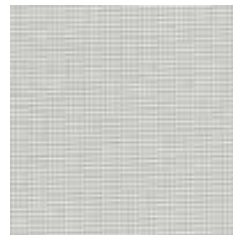
Herbivore
5156-108



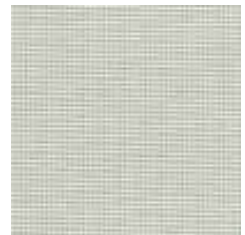
Stone
5156-109



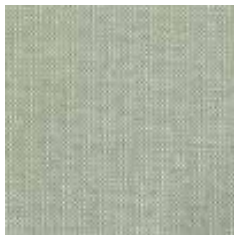
Espresso
5156-110



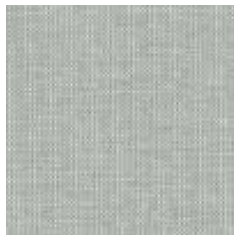
Aluminum
5156-801



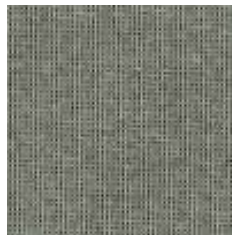
Cloud
5156-802



Morning Fog
5156-803



Smoke
5156-804



Ore
5156-805